

Worcestershire Safeguarding Children Board



Jonathan Picken

worcestershiresafeguarding.org.uk

Safeguarding and Promoting Welfare

Defined as;

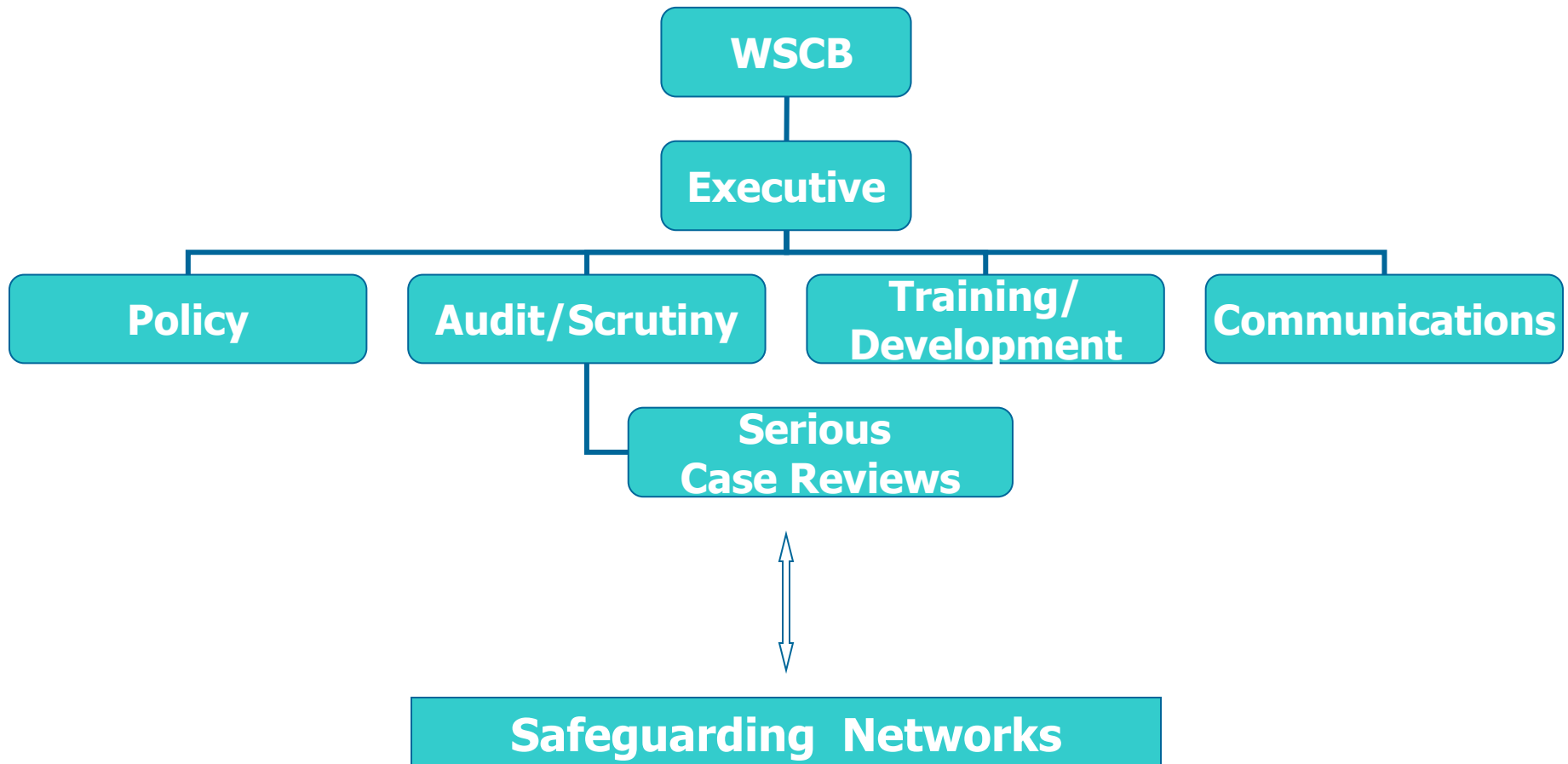
- **Protecting** children from maltreatment
- **Preventing** impairment of children's health or development
- **Ensuring** that children are growing up in circumstances consistent with the provision of safe and effective care

“Children” defined within the
Children Acts 1989 / 2004 as
anyone who has not yet reached
their **18th birthday**

Statutory Mandate

- **Legislation**
S13 of the Children Act (2004) established Local Safeguarding Children Board (LSCB) for each LA area
- **Regulation 5**
Statutory Instrument 2006 No. 90
The Local Safeguarding Children Boards Regulations 2006

WSCB STRUCTURE



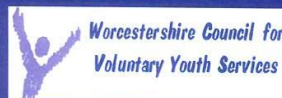
Practitioner's guide to

Safeguarding and Promoting the Welfare of Children



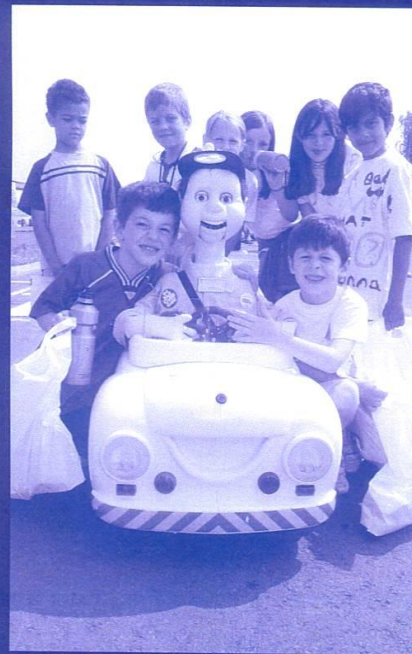
Worcestershire Safeguarding Children Board

Keeping children and young people safe is everyone's responsibility



Safeguarding Children and Young People

Guidance for the Voluntary and Community Sectors



Worcestershire Safeguarding Children Board

Keeping children and young people safe is everyone's responsibility

Working Together to Safeguard Children

A guide to inter-agency working to safeguard and promote the welfare of children



Every Child Matters
Change for Children

** currently being re-written*

Statutory Guidance

(s7 of the Local Authority Social Services Act 1970)

Chapter 8

Serious Case Reviews

Sets out

- **Reviewing & investigative functions of LSCBs**
- **Purpose of SCRs**
 - Criteria**
 - Scope**
 - Timings**
- **IMR requirements**
- **Requirements for the LSCB overview report, accountability & disclosure**
- **Expectations re reviewing institutional abuse**
- **Learning Opportunities**

Serious Case Reviews (SCR)

LSCBs should always undertake a SCR when a child dies (including suicide) and abuse or neglect is suspected to be a factor, irrespective of whether children's social care were involved

SCR: Purpose

To establish if there are lessons to be learnt

- What those lessons are
- How will the lessons be acted on
- What will change

Promote safety & wellbeing of children

** Not inquiries into how a child died or who is culpable*

SCR Process (outline)

SCR Panel agree
scope & timetable for
IMR & reporting

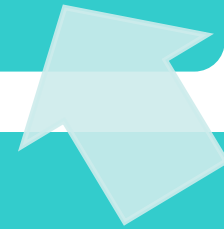
**Completion
within 4 months***

**Agencies
Secure
Records**

SCR Panel assess and
make recommendation
to WSCB Chair

**Decision to
proceed
within 1 month**

Referral to LSCB



**Learning Lessons, Taking action:
Ofsted's evaluations of serious case reviews
1 April 2007 to March 2008 – analysis of 50 cases**

Key Issues

Practice

- **Weakness in record keeping**
- particularly in universal services
- **Poor communication**
- “allowing children to fall into the gaps between services”
- **Lack of child abuse awareness**
- staff failing to identify / report the “signs and symptoms of abuse”

Key Issues

Serious Case Reviews

- **Too great a focus on agencies**
- *not on the child*
- **Adherence to timescales**
- **Lack of independence**
- **Failure to involve family**
- **Lack of focus on diversity**
- **Poor quality IMRs**

Further Reading

